



ROVINNS

ROVINNS



# DEAR ROVINNS FRIENDS

Feel the nature itself-enjoy every moment.  
The new 2024 ROVINNS GAIA brings the  
highest quality for your traveling adventures  
with the feeling of being at home  
wherever you are.

Functional layouts meet a stylish  
and cozy living ambience that leaves  
you wanting for nothing.

Discover our model, which reflect ROVINNS's  
signature strength and innovation. With GAIA,  
you will experience magical moments and  
collect memories that will last a lifetime.

All the bests,  
Your ROVINNS  
Team

## WHAT WE ARE OFFERING?

01

**Nature Connectivity:** Our innovative rear-loading door connects the customer to nature while still enjoying all the conveniences of home.

02

**Mobility:** Gaia provides a mobile living space, allowing you to travel and explore different locations without the need for accommodation.

03

**Comfort:** The interior of Gaia offers luxurious hotel-like comfort, with carefully designed spaces and amenities that provide travelers with a cozy and inviting retreat on the road.



Ö. KORHAN  
ŞİMŞEK

Rovinns Caravan  
Kurucusu

## ABOUT US

Korhan Şimşek was born in 1992 and earned a Bachelor of Science in Production Systems and Industrial Engineering from Sabancı University in 2016 and a masters degree in 2019.

He worked as a Manufacturing Quality Engineer in the Engine, Body, and Exhaust divisions at Oyak Renault Factory until fulfilling his lifelong goal by launching Rovinns Caravan in 2020.

Rovinns wants to offer new and unforgettable experiences, much more than just designing caravans.

Rovinns produces 60 caravans a year in its 500 m2 production facility with an innovative structure and an experienced team.

ROVINNS

# MISSION

## What we do

Rovinn's mission is to offer much more than just the design of caravans, but new and unforgettable experiences. With its innovative structure and experienced team, the company has a production capacity of 60 caravans per year in its 500 m2 production facility.

## What we aim

In line with our goal of continuous development, we aim to create added value in Turkey and to carry out our activities according to international standards with our principles of Quality, Customer Satisfaction and Sustainability and to create sustainable value worldwide.



# ROVINNS GAIA

We began this journey with the greatest respect for Mother Earth that inspired us to name our first and rising star model "GAIA".



UNIQUE

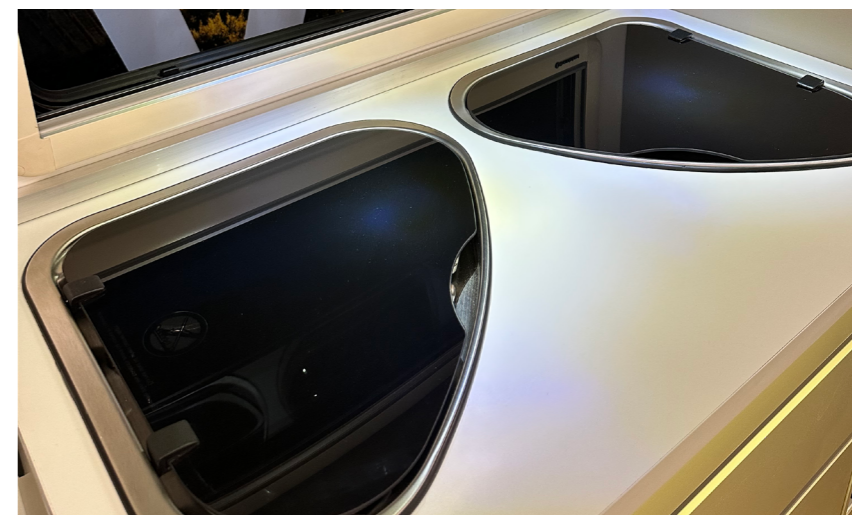


INNOVATIVE



QUALITY

A journey with a ROVINNS is an experience on a whole new level! Our model shines in ELEGANCE, QUALITY and COMFORT.



LIKE  
NATURE



### Safe

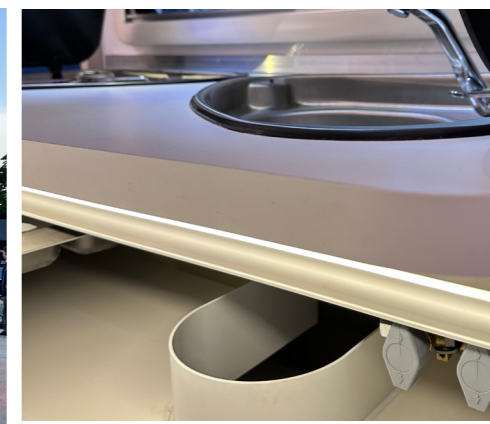
Gaia's safe and enjoyable handling is a result of a chassis designed in tandem with Knott engineers.

### Strong

GAIA is robust to its core with a sealed and insulated body thanks to its fireproof fiberglass monoblock construction.

### Elegant

Rovinns Gaia is instantly recognizable thanks to its sleek body form and hues that blend beautifully with nature.



### Back Loading Door

With functional back loading door, you can easily load your caravan and enjoy the beautiful view wherever you park it.

### Elegant Interior Design

The combination of milk and white reflects the pureness and quality of GAIA.

# STANDARDS ALL YOU NEED

## Chassis

Knott Chassis with trailing arm axle  
Knott Single Axe  
4 Stand legs with crank support  
5 bolt rim  
Handbrake  
Chassis 1,350 kg  
14" tires  
Safety clutch on stabilizer  
Hydraulic shock absorber

## Materials / Vehicle Graphics

Monocoque Body Shell  
GRP Sidewalls  
Foil graphics "ROVINNS" + silver powder-coated stripes

## Windows / Roof Hoods / Ventilation

Body door: with window and blind  
Gas locker with exterior hatch  
Windows with double glazing tinted, curtained and insect screened  
Hinged window 450 x 610 mm, kitchen  
Hinged window 600 x 900 mm front left  
Hinged window 600 x 900 mm rear left

## Kitchen / Bathroom

Thetford 3-burner hob with glass lid  
Sink  
Fridge 90 liters (compressor)  
Thetford Cassette Toilets

## Heating / Gas Supply / Water Supply

Gas heating / Whale  
Water supply with water pump  
Central waste pipe, external drainage under floor  
Fresh water tank 70 lt.  
Water heating (boiler) / Truma Therme 220v  
Gas regulator  
Fresh water filling point

## Electrics / Safety

Electrical connection plug to towing vehicle  
13 pin  
Interior lighting - all in 12 V version  
External socket for 230 V  
Circuit breaker with earth leakage protection  
230 V sockets  
Control panel

## Waranty

10-year leak-proof guarantee  
(in every year service control)

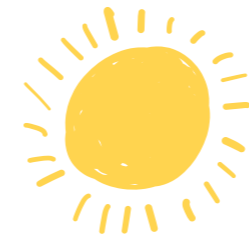
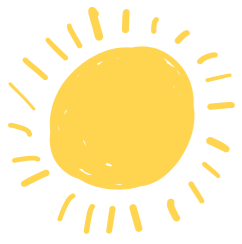
→ DOMETIC |  |  | 



# LAYOUTS

GAIA 424 LP

GAIA 424 BH





## WHAT IS THE ADVANTAGES OF MONOCOQUE CARAVAN?

1. **Lightweight:** Fiberglass is significantly lighter than traditional caravan construction materials like steel or aluminum. This reduced weight makes the caravan easier to tow and can lead to better fuel efficiency for the towing vehicle.

2. **Durability:** Fiberglass is known for its strength and resistance to corrosion, making it a durable choice for the exterior of caravans. It can withstand exposure to various weather conditions, including rain, sun, and saltwater, without deteriorating.

3. **Aerodynamic Design:** Fiberglass allows for sleek and aerodynamic caravan designs, which can reduce wind resistance and improve fuel efficiency during travel. This design advantage can also enhance the overall aesthetic appeal of the caravan.

4. **Insulation:** Fiberglass provides good insulation properties, helping to regulate temperature inside the caravan. This can make it more comfortable for occupants in both hot and cold weather, reducing the need for extensive heating or cooling systems.

5. **Low Maintenance:** Fiberglass requires minimal maintenance compared to sandwiched wall caravans, which may be more susceptible to rot and other forms of degradation. Regular cleaning and occasional waxing are often sufficient to keep the fiberglass exterior looking good.

6. **Resistance to Mold and Mildew:** Fiberglass is inherently resistant to mold and mildew growth, which can be a concern in humid or damp camping environments. This can help maintain a healthy indoor environment.

7. **Longevity:** Fiberglass caravans can have a longer lifespan than those made from other materials due to their durability and resistance to corrosion. This longevity can provide good value for caravan owners.



## TECHNICAL DATA

Total length incl. drawbar (cm)	570
Lenght/Usable length (cm)	432 / 424
Width (outer/inner) (cm)	220/216
Height (outer/inner) (cm)	257 / 195
Awning dimensions (cm)	260 x 200
Effective vehicle mass including legally required basic equipment (kg)	900
Technically maximum authorised laden mass (kg)	1350
Maximum payload (kg)	450
Tyre size	185/R14C - 185/65/R14
Rim size	5,5JX14'
Max. Berths Number	4
<b>Body</b>	
Total number of hinged windows	3
Body door (width x height) in mm	1754 mm x 580 mm
Wall thickness, roof (mm)	40 mm
Wall thickness, side wall (mm)	35 mm
Wall thickness, floor (mm)	45 mm
<b>Living Area</b>	
Bed size, front	1950 mm x 1300 mm
Bed size, couch	1810 mm x 600 mm
Bed size, converted couch	1810 mm x 1000 mm
<b>Water</b>	
Fresh water volume in liters	70
<b>Kitchen</b>	
Refrirator (ltr.)	90
<b>Electrical Supply</b>	
Number of 230 V socket(s)	4
Number of USB socket(s)	-



GAIA

*Standards*

*& Optionals*



## Standard Equipped

- 1-Thetford Triangular Three Burner Hob
- 2-Stainless Steel Sink and Tap
- 3-Thetford T2090 90 L 12 v Refregerator
- 4-500\*900 Windows with Curtains and Nets (2 pcs)
- 5-300\*500 Windows with Curtains and Nets (Kitchen)
- 6-Hartal Caravan Door
- 7-Gas Regulator
- 8-Whale 4 kw Heater (Gas)
- 9-Truma Therme Boiler (230 v Electric)
- 10-CBE PC 260 Digital Control Panel
- 11-Awning Light
- 12-230 v Electric Socket
- 13-Thetford C223-CS 18 Liter Cassette Toilet
- 14-55 Litre Fresh Water Tank
- 15-Fresh Water Filling Point
- 16-Comet Submerged Water Pump

## Optionals

- |   |        |
|---|--------|
| 1-Energy Package                                | € 1280 |
| 2-Energy Plus Package                           | € 2110 |
| 3-Allow Wheels                                  | € 375  |
| 4-Wifi & Rear Camera                            | € 410  |
| 5-Caravan Tent                                  | € 1015 |
| 6-19'' TV                                       | € 270  |
| 7-Antenna-Point                                 | € 110  |
| 8-ETS Plus Electrical Stabilizator              | € 825  |
| 9-Truma Mover Smart M                           | € 1150 |
| 10-Truma Aventa Compact Air Conditioner (230 V) | € 2025 |
| 11-Hartal Caravan Door Mosquito Net             | € 135  |
| 12-Rear Door with Mosquito Net                  | € 690  |
| 13-500*700 MPK Roof Hood                        | € 380  |
| 14-Gas-Tank                                     | € 50   |
| 15-Service Door for Under Bed Storage           | € 95   |
| 16-Reading Lamps (2 Pcs)                        | € 90   |
| 17-Shower Set and Showe Curtain                 | € 205  |
| 18-BBQ-Point                                    | € 90   |
| 19- City Water                                  | € 200  |

\*Installation is included in the price.



GAIA

*Comfort*



## Comfort Package

- 1-Thetford Triangular Three Burner Hob
- 2-Thetford Triangular Sink and Foldable Tap
- 3-Thetford T2090 90 L 12 v Refregirator
- 4-500\*900 Windows with Curtains and Nets (3 pcs)
- 5-500\*700 MPK Roof Hood (1 pcs)
- 6-Hartal Caravan Door
- 7-Rear Door with Insect Net
- 8-CBE PC 260 Digital Control Panel
- 9-Awning Light
- 10-230 v Electric Socket
- 11-100 Ah Lithium Battery
- 12-1,5 m Electric Supply Cable
- 13-Thetford C223-CS 18 Liter Cassette Toilet
- 14-55 Litre Fresh Water Tank
- 15-Fresh Water Filling Point
- 16-11 Liter Filtered Water Pump
- 17-Outdoor Shower
- 18-City Water

- 19-Shower Set
- 20-280\*280 Vent Roof Hood (Washroom)
- 21-Gas Regulator
- 22-Whale 4 kw Heater (Gas)
- 23-Truma Therme Boiler (230 v Electric)
- 24-Thule 4200 Awning (260\*200)
- 25-Rovinns Couplin Cover
- 26-Knott Big Foot
- 27-Knott Couplin Lock

## Standard Chassis Equipment

- 1- Knott KS25 Stabilizer Drawbar
- 2-Knott Shock Absorbers
- 3-Chassis Cover
- 4-1350 Kg Axe



GAIA

*Luxury*



## Luxury Package

- 1-Thetford Triangular Three Burner Hob
- 2-Thetford Triangular Sink and Foldable Tap
- 3-Thetford T2090 90 L 12 v Refregirator
- 4-Thetford 420 Gas Oven
- 5-500\*900 Windows with Curtains and Nets (3 pcs)
- 6-Bedside Window with Curtains and Nets (1 pcs)
- 7-500\*700 MPK Roof Hood (2 pcs)
- 8-Hartal Caravan Door
- 9-Rear Door with Insect Net
- 10-Under Bed Service Door
- 11-CBE PC 260 Digital Control Panel
- 12-Bedhead Reading Lamps (2 pcs)
- 13-Awning Light
- 14-230 v Electric Socket
- 15-200 Ah Lithium Battery
- 16-1,5 m Electric Supply Cable
- 17-Thetford C223-CS 18 Liter Cassette Toilet
- 18-55 Litre Fresh Water Tank

- 19-Fresh Water Filling Point
- 20-11 Liter Filtered Water Pump
- 21-Outdoor Shower
- 22-City Water
- 23-Shower Set and Curtain
- 24-280\*280 Vent Roof Hood (Washroom)
- 25-Truma Mono Gas Regulator
- 26-BBQ Point
- 27-Whale 4 kw Heater (Gas)
- 28-Truma B10 Boiler (Gas)
- 29-Thule 4200 Awning (260\*200)
- 30-Rovinns Couplin Cover
- 31-Knott Big Foot
- 32-Knott Couplin Lock

## Standard Chassis Equipment

- 1- Knott KS25 Stabilizer Drawbar
- 2-Knott Shock Absorbers
- 3-Chassis Cover
- 4-1350 Kg Axe



GAIA

*Premium*



## Premium Package

- 1-Thetford Triangular Three Burner Hob
- 2-Thetford Triangular Sink and Foldable Tap
- 3-Thetford T2138 138 L 12 v Refregirator
- 4-Thetford 420 Gas Oven
- 5-500\*900 Windows with Curtains and Nets (3 pcs)
- 6-Bedside Window with Curtains and Nets (1 pcs)
- 7-500\*700 MPK Roof Hood (2 pcs)
- 8-Hartal Caravan Door
- 9-Rear Door with Insect Net
- 10-Under Bed Service Door
- 11-CBE PC 260 Digital Control Panel
- 12-Bedhead Reading Lamps (2 pcs)
- 13-Awning Light
- 14-230 v Electric Socket
- 15-200 Ah Lithium Battery
- 16- 1,5 m Electric Supply Cable
- 17-Thetford C223-CS 18 Liter Cassette Toilet

- 18-55 Liter Fresh Water Tank
- 19-Fresh Water Filling Point
- 20-11 Liter Filtered Water Pump
- 21-Outdoor Shower
- 22-City Water
- 23-Shower Set and Curtain
- 24-280\*280 Vent Roof Hood (Washroom)
- 25-Truma Duo Gas Regulator
- 26-BBQ Point
- 27-Truma Combi 4 (Gas)
- 28-Thule 4200 Awning (300\*250)
- 29-Rovinns Couplin Cover
- 30-Knott Big Foot
- 31-Knott Couplin Lock

## Standard Chassis Equipment

- 1- Knott KS25 Stabilizer Drawbar
- 2-Knott Shock Absorbers
- 3-Chassis Cover
- 4-1350 Kg Axe



ROVINNS

# ENJOY BEING IN THE NATURE

If you want to break away from the stresses of modern living, come welcome the joys of freedom. Rovinns offers a mobile, minimalist way of living for you to explore nature with style and comfort. Now, embrace the limitless life force of green and blue, because with Rovinns the world is yours.



**ROVINNS**  
caravans mobile homes

Phone: +90 507 873 73 63 E-mail: info@rovinns.com  
Address: Üçevler Mahallesi, 66.(220) Sokak, Küçük Sanayi Nilüfer  
Ticaret Merkezi No: 5/1 Nilüfer / BURSA TÜRKİYE

 rovinns caravan  www.rovinns.com